



1700 I STREET



Historic Retail and Creative Office Building
Ground Floor Retail For Lease in Midtown



2131 CAPITOL AVE, STE 100
SACRAMENTO, CA 95816
916.573.3300 | [TURTON.COM.COM](https://www.turton.com)

KEN TURTON
PRESIDENT - LIC. 01219637
916.573.3300
[KENTURTON@TURTON.COM.COM](mailto:KENTURTON@TURTON.COM)

KIMIO BAZETT
DIRECTOR - LIC. 02152565
916.573.3315
[KIMIOBAZETT@TURTON.COM.COM](mailto:KIMIOBAZETT@TURTON.COM)

MATT AXFORD
DIRECTOR - LIC. 02124801
916.573.3308
[MATTAXFORD@TURTON.COM.COM](mailto:MATTAXFORD@TURTON.COM)

© 2024 This information has been secured from sources believed to be reliable. Any projections, opinions, assumptions or estimates used are for example only and do not constitute any warranty or representation as to the accuracy of the information. All information should be verified through an independent investigation by the recipient, prior to execution of legal documents or purchase, to determine the suitability of the property for their needs. Logos and/or pictures are displayed for visual purposes only and are the property of their respective owners.



CLICK OR SCAN FOR
BUILDING TOUR

THE OPPORTUNITY

3,040 SF OFFICE / RETAIL | **\$2.50** PER SF NNN | **EXPOSED** CEILINGS/HVAC | **420,000** VISITORS NEXT DOOR | **31 + 1 ADA** PARKING STALLS

UNIQUE, HISTORIC AND STORIED BUILDING IN THE HEART OF MIDTOWN

Turton Commercial Real Estate is thrilled to present an extraordinary opportunity to lease a highly visible, street-facing ground floor retail and office space at 1700 I Street, a stand-alone historic mixed-use property nestled in the bustling heart of Midtown Sacramento. Strategically positioned between the influx of urban core traffic on J Street and the outflow on I Street, and merely a block away from the major arterial road, 16th Street, this property enjoys an unparalleled location. Just like its neighboring Target, which draws an impres-

sive 420,000 visitors annually*, this prime spot is destined to become a landmark destination within the dynamic downtown Midtown landscape. This remarkable property offers up to ± 3,040 square feet of contiguous interior retail or creative office space, enhanced by abundant parking, ensuring a seamless and hassle-free experience for shoppers, patrons, and employees alike. It's a perfect harbor for a variety of food and beverage uses seeking to anchor themselves amid the vibrant pulse

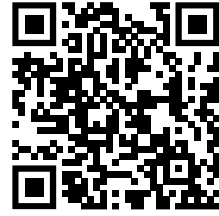
of downtown Sacramento's lively and diverse atmosphere. Seize the day by placing your business in this historic yet contemporary space, where the charm of yesteryears meets modern convenience. With its prime location and exceptional visibility, 1700 I Street offers an unmatched opportunity to elevate your brand and engage with a thriving urban audience. Don't miss the chance to stamp your presence in one of Sacramento's most coveted commercial corridors.



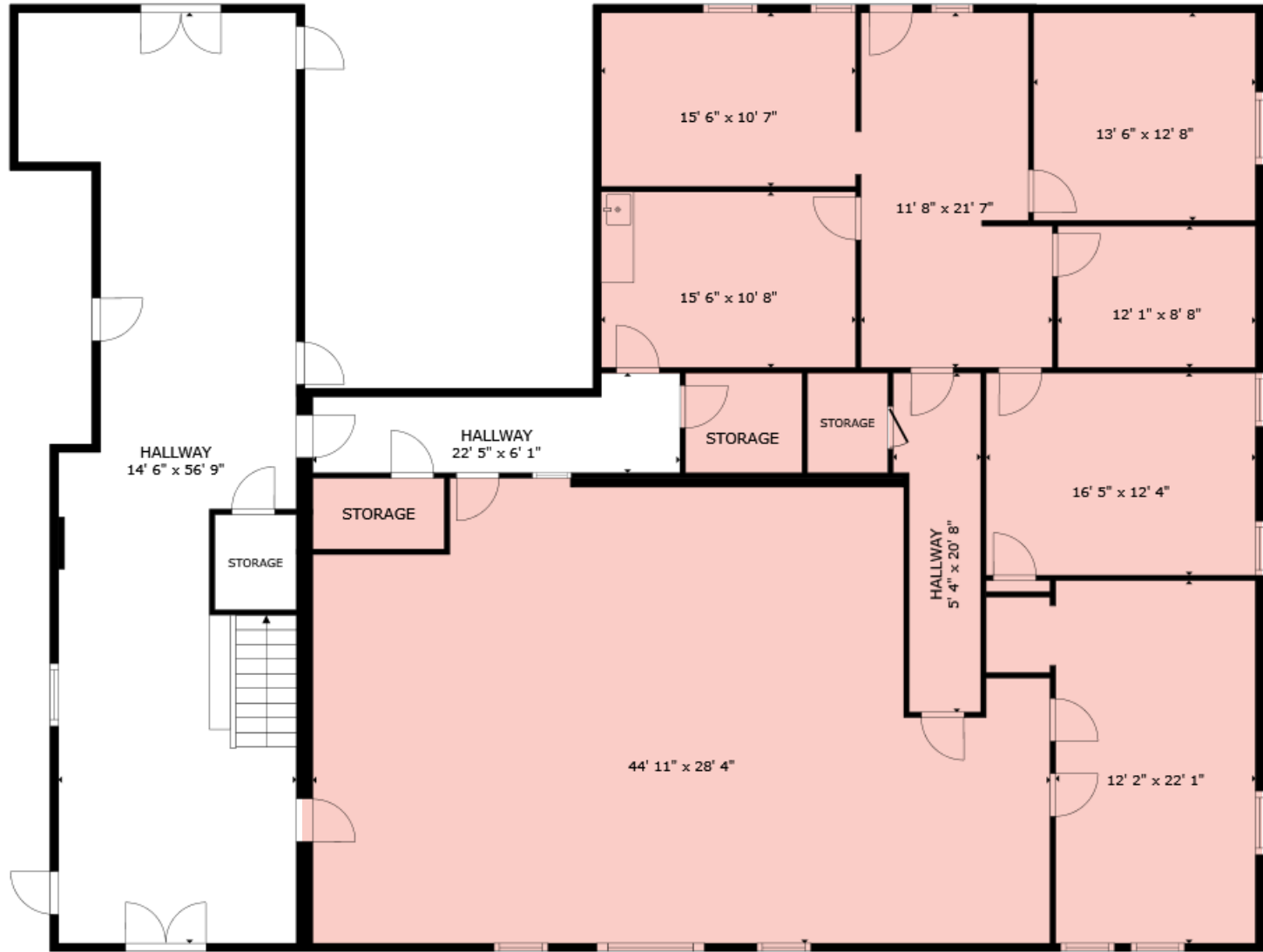
**RARE OPPORTUNITY TO LEASE SPACE
NEXT TO MIDTOWN'S FAVORITE PLANT
SHOP AND EVENT SPACE: PROPAGATE**



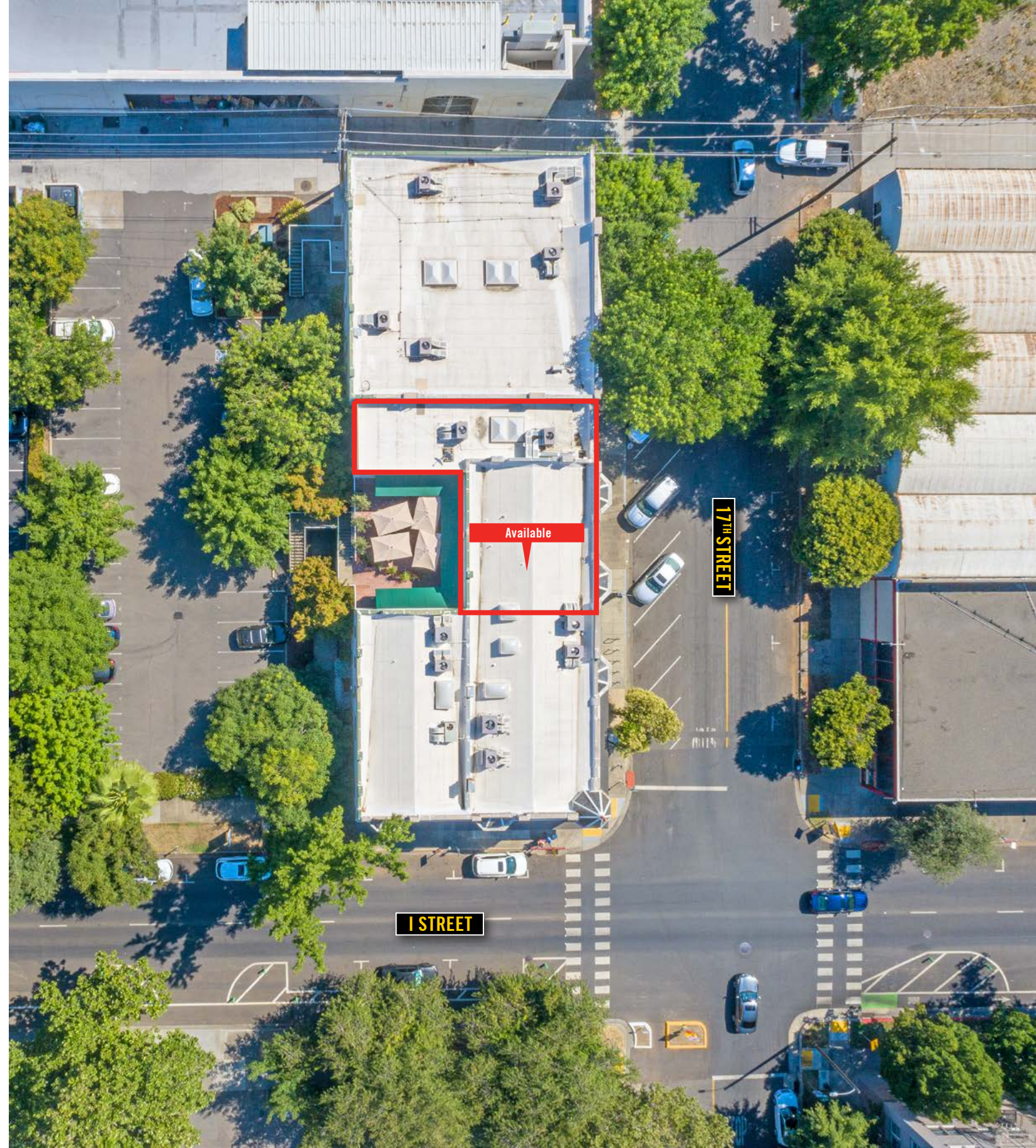
THE FLOOR PLAN



CLICK OR SCAN FOR BUILDING TOUR



GROUND FLOOR



THE LOCATION



1 BLOCK
TO THEATER DISTRICT

3 BLOCKS
TO LAVENDER HEIGHTS

4 BLOCKS
TO HANDLE DISTRICT

9 BLOCKS
TO GOLDEN 1 CENTER

PRIME LOCATION: HIGH VISIBILITY, MAJOR RETAILERS, AND DAILY TRAFFIC FLOW

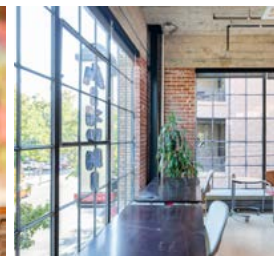
Midtown Sacramento is the perfect blend of carefully curated local, national, and regional retailers with an eclectic mix of high-end demographic occupations embedded in a landscape of unique older buildings paired with mature trees. Business owners, residents, and investors near and far have flocked to the center of Sacramento's art, music, and cultural scene to cash in on the fruitful submarket. Many consider Midtown to be the most desirable area in the city, with easy freeway access

and proximity to Downtown, Old Sacramento, West Sacramento, and East Sacramento. The subject property at 1700 I Street is perfectly situated within walking distance of the Theatre District, Handle District, and Lavender Heights, offering easy access to many of Midtown and Downtown's most desirable events and amenities. I Street itself is a major thoroughfare, with approximately 6,938 cars passing through daily, ensuring high visibility and accessibility. Within a two-block radius of

1700 I Street, you'll find several notable retailers that draw people from all over Midtown for essentials. These include Target, a major retail store offering a wide range of products, BevMo!, a well-stocked beverage retailer, and the future Whole Foods Market, which will provide high-quality groceries and organic products. These key retailers make 1700 I Street an ideal location for both convenience and lifestyle, attracting a steady stream of visitors from the surrounding areas.



2 THE LOCATION
1700 I STREET



THE THEATER DISTRICT

PLACER AI JULY 2023 - JULY 2024

 9 BLOCKS	 2.7M YEARLY VISITS	 9 BARS & RESTAURANTS	 \$88,631 HOUSEHOLD INCOME
---	--	--	---

TOP VISITORS: SINGLES & STARTERS, BOOMING W/ CONFIDENCE, FLOURISHING FAMILIES

The Theater District in Sacramento is renowned for its world-class opera, ballet, and national Broadway tours. The SAFE Credit Union Convention Center and Performing Arts Center draw innovators, enthusiasts, and thespians to Downtown. Surrounding

this cultural hub, you'll find a variety of dining options that add to the district's appeal. Notable restaurants include Mikuni Sushi, known for its vibrant atmosphere and exquisite sushi rolls; Public House Downtown, offering a diverse menu featuring American-style cuisine

and an impressive beer selection; and Cafeteria 15L, popular for its modern American fare. Whether you're attending a show or exploring the vibrant streets, the Theater District offers an enriching cultural and dining experience that caters to a variety of tastes and preferences.





2 THE LOCATION

1700 I STREET



LAVENDER HEIGHTS

PLACER AI JULY 2023 - JULY 2024



3
BLOCKS



1.1M
YEARLY VISITS



12
BARS & RESTAURANTS



\$75,149
HOUSEHOLD INCOME

TOP VISITORS: SINGLES & STARTERS, YOUNG CITY SOLOS & SIGNIFICANT SINGLES

Lavender Heights in Sacramento has emerged as one of the city's hottest micro-markets, with the MARRS building at its epicenter. The neighborhood recently welcomed rainbow crosswalks, symbolizing its commitment to cultural inclusion and progressive thinking. This area serves as an

excellent starting point for the popular Second Saturday festivities and hosts various noteworthy events, including Midtown Love, Midtown Mini, THIS Sacramento block parties, and PARK(ing) Day. One of the standout attractions is the Midtown Farmers' Market, held year-round on Saturdays.

This vibrant market attracts thousands of visitors each week, offering a wide array of local produce, artisanal goods, and community activities. It has become a cornerstone event for Lavender Heights, highlighting the area's dynamic atmosphere and community spirit.

2 THE LOCATION
1700 I STREET



THE HANDLE DISTRICT

PLACER AI JULY 2023 - JULY 2024

 3 BLOCKS	 1.3M YEARLY VISITS	 18 BARS & RESTAURANTS	 \$86,038 HOUSEHOLD INCOME
---	--	---	---

TOP VISITORS: SINGLES & STARTERS, YOUNG CITY SOLOS & THRIVING BOOMERS

The Handle District in Sacramento is a vibrant and bustling area known for its eclectic mix of successful restaurants, nightlife venues, local eateries, art galleries, coffee houses, and boutiques. This district experiences high foot traffic both day and night, making it a hotspot

for those who love to eat, drink, and enjoy Midtown's popular establishments. Notable spots include Zocalo, known for its vibrant Mexican cuisine; The Rind, specializing in cheese and wine; Mulvaney's B & L, offering upscale American fare; Aioli Bodega Espanola, with its

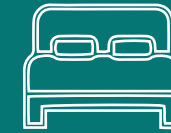
authentic Spanish dishes; and Saigon Alley Kitchen + Bar, featuring flavorful Vietnamese cuisine. Whether you're in the mood for a gourmet meal, a casual bite, or a night out on the town, the Handle District has something to offer for everyone.



THE HOTEL SCENE



34
HOTELS



4,396
HOTEL ROOMS



67.9%
12 MO OCCUPANCY



179
12 MO DELIVERED

HYATT REGENCY

Upscale hotel with 505 rooms across from the State Capitol. Dining options include a steakhouse, a Starbucks and a cocktail bar. There's also a heated outdoor pool, a whirlpool tub and a spa, plus a gym, a business center and 28,000 SF of event space.

SHERATON GRAND HOTEL

Located at 1230 J Street, offers 503 modern rooms and suites with top-of-the-line amenities. Adjacent to the Convention Center and near the State Capitol, it features 23,000 SF of conference and event space with natural lighting, audio-visual services, and a Sheraton Club Lounge. Ideal for both executive and leisure travelers.

RESIDENCE INN BY MARRIOTT

The renovated, modern, tech-savvy extended stay hotel in Downtown, features 235 rooms and an energized lobby. Located in vibrant Midtown, it's across from the Safe Credit Union Convention Center and State Capitol Park, and within walking distance to the Community Center Theater, dining, and shopping options.

THE CITIZEN HOTEL

The Citizen Hotel is a luxury, boutique hotel in the heart of the city, blending the best of two eras, combining the formality and magnificence of Sacramento's history with today's modern expectations. The Citizen Hotel welcomes weddings.

EMBASSY SUITES

Located on the Sacramento River across from historic Old Sacramento, the Embassy Suites is

the only "all suite" full service hotel on the river. A complimentary full cooked-to-order breakfast and nightly Manager's Reception are included benefits with every spacious suite. The hotel also features meeting facilities, restaurant, pool, spa, fitness and business center.

HYATT CENTRIC NEW

The newly completed 165 room Hyatt Centric is nestled beside Golden 1 Center and DOCO. Standing in the site of the historic Clayton Hotel, later named Marshall Hotel, guests are whisked away into the glamour of yesteryear while enjoying modern creature comforts.

KIMPTON SAWYER HOTEL NEW

Located in Downtown Commons (DOCO), Kimpton Sawyer Hotel offers 250 guestrooms inspired by Northern California's natural beauty. Overlooking the Golden1 Center, it is surrounded by shopping, art galleries, restaurants, and farmer's markets.

EXCHANGE SACRAMENTO NEW

After more than a century as an office building — and Sacramento's first skyscraper — the California Fruit Building's transformation into a boutique hotel is complete. Just blocks from 1000 K Street and Golden 1 Center, this newly renovated 62,000 square foot historic 10-story hotel is in the heart of Downtown Sacramento.

AC HOTEL BY MARRIOTT NEW

New hotel home to 179-rooms and ground-floor retail. The hotel is situated just West of an office building being redeveloped by the same developer and is within walking distance of Golden 1 Center.

CONVENTION CENTER HOTEL PROPOSED

A new 28-story hotel is planning to occupy the corner of 15th and K Street, adjacent from the SAFE Credit Union Convention Center. It will rival nearby Sheraton Grand as the tallest hotel in the city.

10K PROPOSED

Mohanna Development Co. plans a 15-story building with 186 small residential units and a 205-room hotel. The project includes 7,400 sq. ft. of ground-floor retail space, aiming to attract younger capitol staffers and students with communal areas and group apartments for a dorm-like experience.

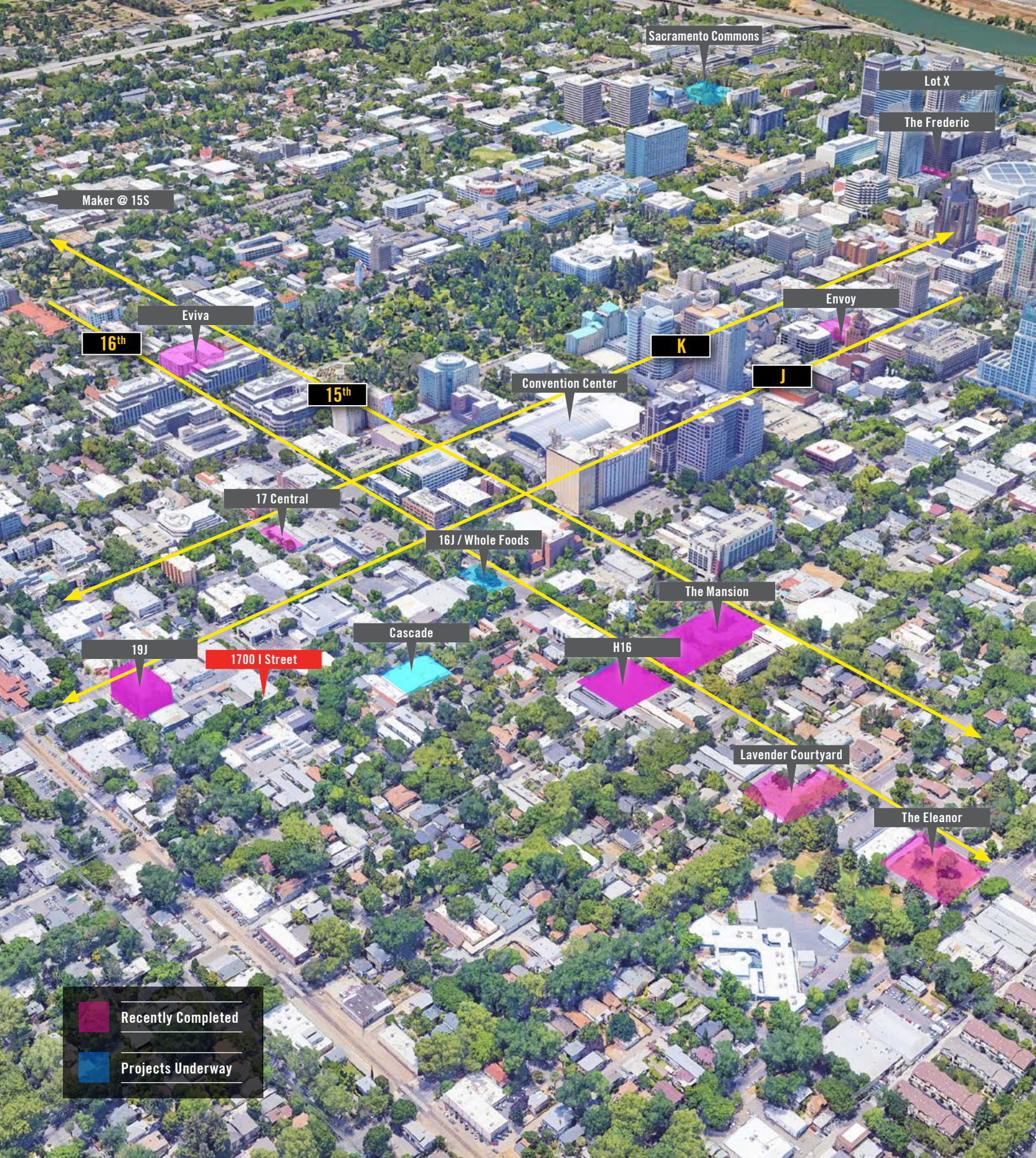
CANOPY BY HILTON PROPOSED

The proposed development is a 14-story Canopy by Hilton hotel, covering 243,431 square feet, and will feature 275 hotel rooms along with 50 apartments situated above the hotel accommodations. This project marks the introduction of the first Canopy by Hilton, a boutique luxury brand, to the Sacramento area. The hotel's amenities will include a ground floor restaurant and bar, a rooftop lounge, and the upper floors will be dedicated to residential apartments.

141 PROPOSED

Unconventional Airbnb-style hotel where guests arrange accommodation via direct contact with room owners or the Airbnb service. The project will include 19 rooms.





■ Recently Completed
■ Projects Underway

2 THE LOCATION
1700 I STREET

NEW RESIDENTS ON THE CORRIDOR

16th and J Mixed Use



Along the entire north side of J Street between 16th and 17th streets, a parking lot, restaurant building and vacant auto shop is proposed a seven-story, 200-apartment-unit project with ground-floor commercial space.

Cascade



Corner of 17th and I Street is a proposed 8-story project of 208 residential units with ground floor retail.

The Mansion



Rising on the site of the former Mansion Inn Hotel at 16th and H Streets is a 5-story mixed-use community of 186 residential apartments, delivering Spring 2022.

Envoy



Mixed-use development with 153 units over 10,250 SF of retail space.

Maker @ 15S



A Mixed-use development project near the R Street Corridor with 137 units over 9,175 SF of retail space with a 2023 completion date. Project is currently underway.

The Frederic



Mixed-use development project with 162 units over 7,000 SF of retail space with a 2022 completion.

E@16 - The Eleanor



Corner of E and 16th Street, featuring 95 units, luxurious lobby, dog spa, fitness center, and roof deck.

Lot X



Proposed mixed-use development with a residential skyscraper component at 201 N Street. If built, the 32-story structure would be the tallest residential skyscraper in the State Capitol. Beyond housing, Lot X would create an open plaza overlooked by townhomes, a five-story office building, and a seven-story garage.

Sacramento Commons



Mixed-use development project with 436 units over 6,000 SF of retail space. 2022 - 2023

SACRAMENTO DATA BITES

Urban Sacramento is the perfect blend of carefully curated local and national retail embedded in a landscape of unique older buildings, mature trees, and a burgeoning mural scene. Business owners, residents, and investors near and far have flocked to the center of Sacramento's art, music, and cultural scene to cash in on this fruitful submarket. In July 2020, Sacramento was the most popular migration destination in the U.S, with more than half of home searches coming from buyers outside of the area (Redfin). In 2023 Forbes named Sacramento the best place to live in California. Attracted by the affordability of real estate, lower cost of living and booming Downtown, many have found that Sacramento is an ideal location to achieve a turnkey live-work-play lifestyle.

SACRAMENTO'S CITY RANKINGS:

- #1 Best Place to Live in CA
- #1 Happiest Workers in Mid-sized City
- #3 Best Foodie City in America
- #4 Best Cities for Nerds
- #5 U.S. Cities with Fastest Growth in Tech Jobs
- #5 Bike-friendly Cities
- #6 Nation's Greatest Cities for Food Lovers
- #7 Best Place to Raise Active Children
- #9 City with Best Connectivity in U.S.
- #9 City for Happiest Young Professionals
- #10 Best City for Women in the Workforce
- #10 Most Hipster City in America

POPULATION GREATER SACRAMENTO REGION

2,623,204

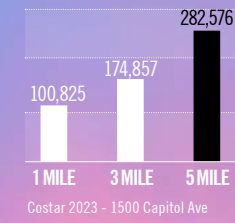
GSEC 2023
Applied Geographic Solutions & GIS Planning 2022

PERCENTAGE OF POPULATION WITH A DEGREE OR SOME COLLEGE:

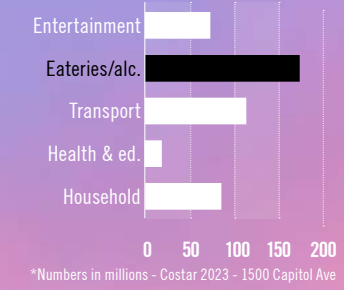
68%

GSEC 2023
Applied Geographic Solutions & GIS Planning 2022

NUMBER OF EMPLOYEES WITHIN VARYING RADIUS OF THE STATE CAPITOL:



ANNUAL CONSUMER SPENDING WITHIN ONE MILE OF THE STATE CAPITOL:



COST OF LIVING INDEX - \$100,000 BASE SALARY MOVE TO SACRAMENTO FROM SAN FRANCISCO

Grocery will cost:	18.68% less
Housing will cost:	52.93% less
Utilities will cost:	17.94% less
Transportation will cost:	9.30% less
Healthcare will cost:	12.58% less

GSEC 2023
Applied Geographic Solutions & GIS Planning 2022

SACRAMENTO LARGEST JOB COUNTS BY OCCUPATION:

Office & Administrative Support	14.20%	115,931
Sales	10.91%	89,063
Executive, Managers & Admin	10.58%	86,391
Food Preparation, Serving	6.12%	49,978
Business and Financial Operations	5.94%	48,500

GSEC 2023
Applied Geographic Solutions & GIS Planning 2022

SACRAMENTO OWNERS VS. RENTERS



GSEC 2023
Applied Geographic Solutions & GIS Planning 2022

WALK
SCORE:
98
Walker's
Paradise

BIKE
SCORE:
62
Biker's
Paradise

TRANSIT
SCORE:
96
Good
Transit

walkscore.com
1500 Capitol



2131 CAPITOL AVE, STE 100
SACRAMENTO, CA 95816

916.573.3300 | TURTONCOM.COM

KEN TURTON

PRESIDENT - LIC. 01219637
916.573.3300
KENTURTON@TURTONCOM.COM

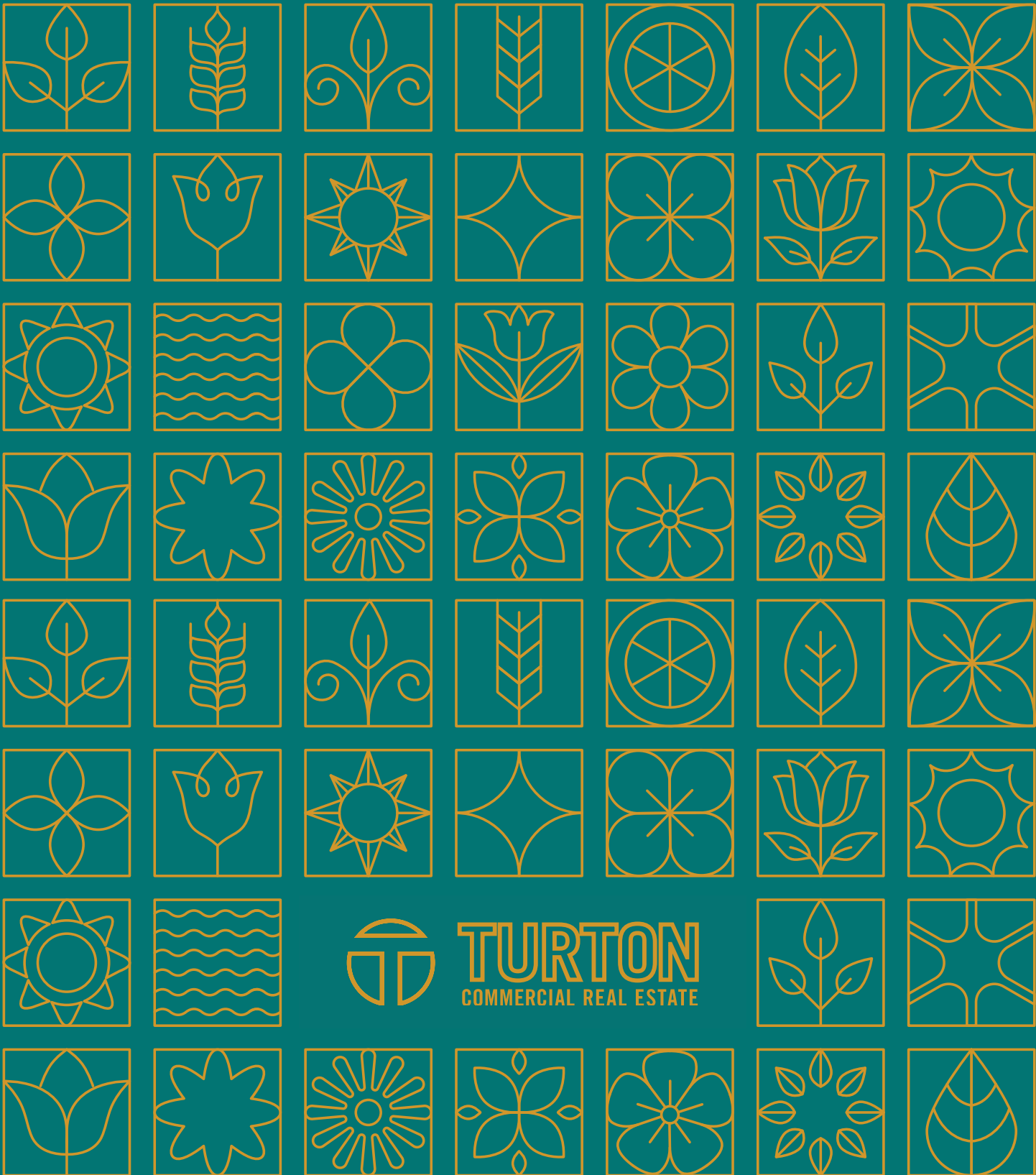
KIMIO BAZETT

DIRECTOR - LIC. 02152565
916.573.3315
KIMIOBAZETT@TURTONCOM.COM

MATT AXFORD

DIRECTOR - LIC. 02124801
916.573.3308
MATTAXFORD@TURTONCOM.COM

© 2024 This information has been secured from sources believed to be reliable. Any projections, opinions, assumptions or estimates used are for example only and do not constitute any warranty or representation as to the accuracy of the information. All information should be verified through an independent investigation by the recipient, prior to execution of legal documents or purchase, to determine the suitability of the property for their needs. Logos and/or pictures are displayed for visual purposes only and are the property of their respective owners.



TURTON
COMMERCIAL REAL ESTATE